

ProfiSeal Propellershaft Seal 20–90 mm, water- or oillubricated



Technical Features

water- or oillubricated face type seal, seawater resistant,
for open or closed sterntube-systems

easy installation

high lifetime even in extremely dirty waters

no shaft-wear compared to radial type seals

due to face type design

allowed shaft movement

axial: +/- 5 mm

radiale: +/- 2 mm

Operating Limits

shaft diameter max: 90 mm

medium to be sealed: seawater, oil, etc.

medium temperature: seawater -5° to +40° C

oil -5° to +70° C

operating pressure: 0,1 to 1,5 bar

gliding speed max: 10 m/s

flushing/cooling: approx. 2,5 l/hr per mm
shaft diameter

ProfiSeal Propellershaft Seal

**ProfiSeal Propellershaft Seal
Shaft Diameters 20 - 90 mm**

Dimensions (mm)

D	d1	d2	d3	d4	L1	L2	L3	M1	M2	n
20	74	105	90	available from 50 mm only	64	8	available from 50 mm only	G-1/8"		3
25	87	120	105		68					
30	97	130	115	available from 50 mm only	72	10	40	G-1/4"	M8	4
40	112	140	125							
45	135	170	150	170	73	10	40			6
50	145	180	160	180						
55	155	190	170	190						
60	165	200	180	200						

Other Shaft Sizes (D) and Imperial Sizes on Request

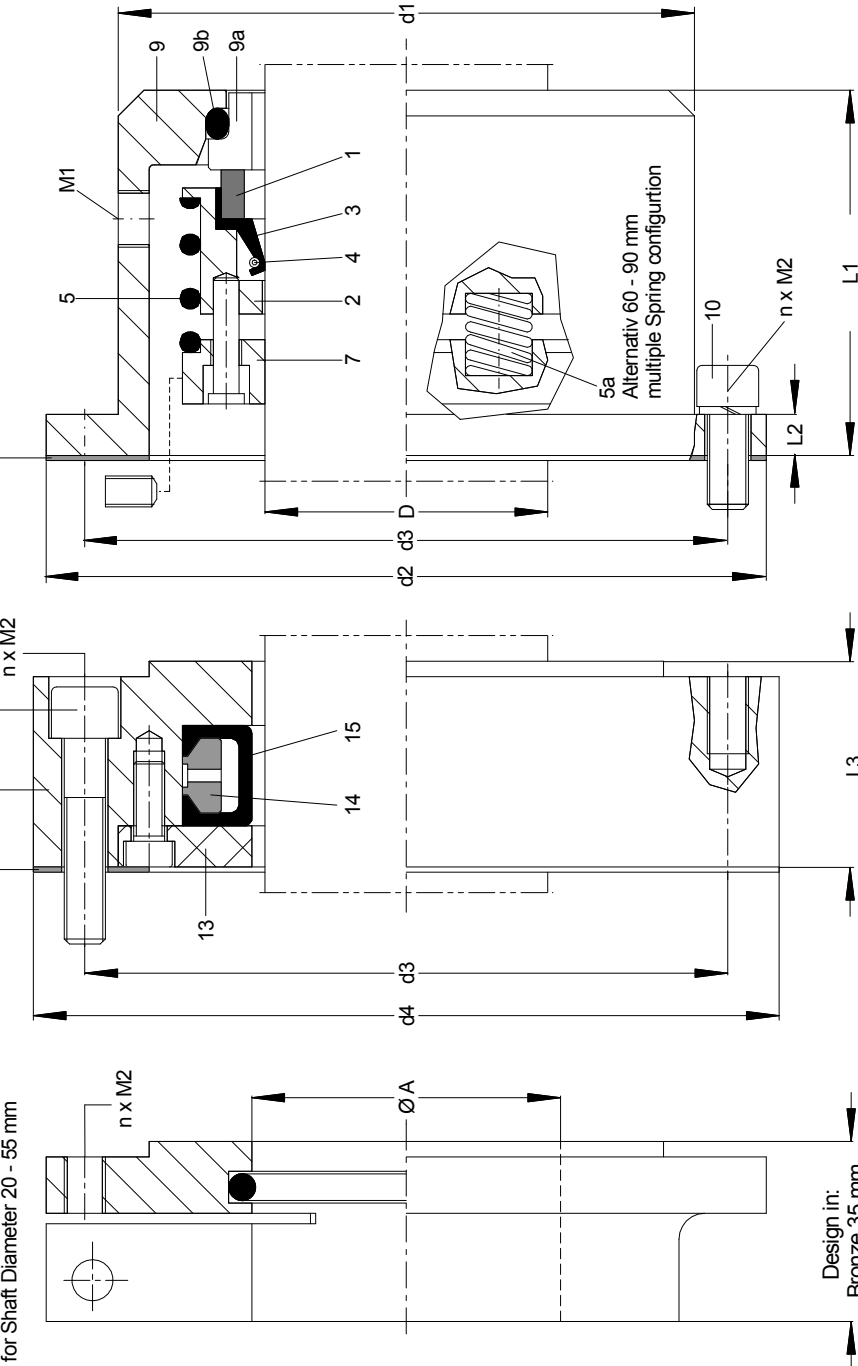
Pos.	Description	Material
1	Seal face	Carbon - Graphit
2	Face housing	1.4571
3	Collar	NBR Perbunan
4	Spring	1.4401/1.4571
5	Spring	1.4401/1.4571
6	Clamp ring	1.4571
7	Housing	Bronze/ altern. Alu / CRES
8	Mating ring	Chromium steel
9	O - ring	NBR Perbunan
9a	Housing bolts	A 4 - 70
9b	Gasket	Burasil o.equiv.
10	Pneumostop flange	Bronze/ altern. Alu / CRES
11	Cover	Bronze/ altern. Alu / CRES
11a	Ring	Bronze/ altern. Alu / CRES
12	Pneumostop	NBR Perbunan
13	Flange bolts	A 4 - 70

Optional:

Pneumostop Unit, inflatable stand still seal, available from shaft diameter 50 mm, Pmax. = 7 bar
Pneumostop should not be inflated while shaft turns
air inlet should normally be open.

Pneumostop Unit

Optional:
for Shaft Diameter 20 - 55 mm

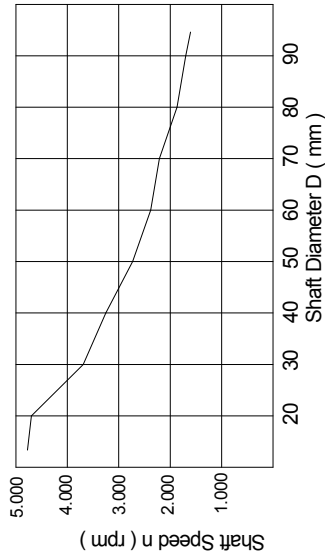


Design in:
Bronze 35 mm
Aluminium 40 mm

Ø A = Diameter Sterntube
can be finally machined to the following dimensions for the different seal sizes.

Ø D Shaft	Ø A Sterntube
20	32 ... 45 mm
25	40 ... 60 mm
30	50 ... 75 mm
35	60 ... 90 mm
40	
45	
50	
55	

Diagramm: Max. Shaft Speed



ProfiSeal GmbH
Dichtungs- und Lagertechnik für Berufs- und Spornschnifflahrt
Mühlerstraße 13
D-55288 Schomshoim
Tel 06732 961476 Fax 06732 961477

Datum		Name	
Bearb.	14.09.04	H. Aumüller	
Gepr.			
Norm			
Projekt			
Zust.	Änderung	Datum	Name

Design in seawater resistant: Bronze,
(Altern.: Aluminium / CRES)

ProfiSeal Propellershaft Seal
water- or oillubricated
Shaft - Ø 20 - 90 mm

Optional: Pneumostop, Installation Flange
Alternativ: 60 - 90 mm multiple spring configuration
Dateiname: Drawings / ProfiSeal 20-90mm English Databaatt SKF

Scale: ohne

Blatt